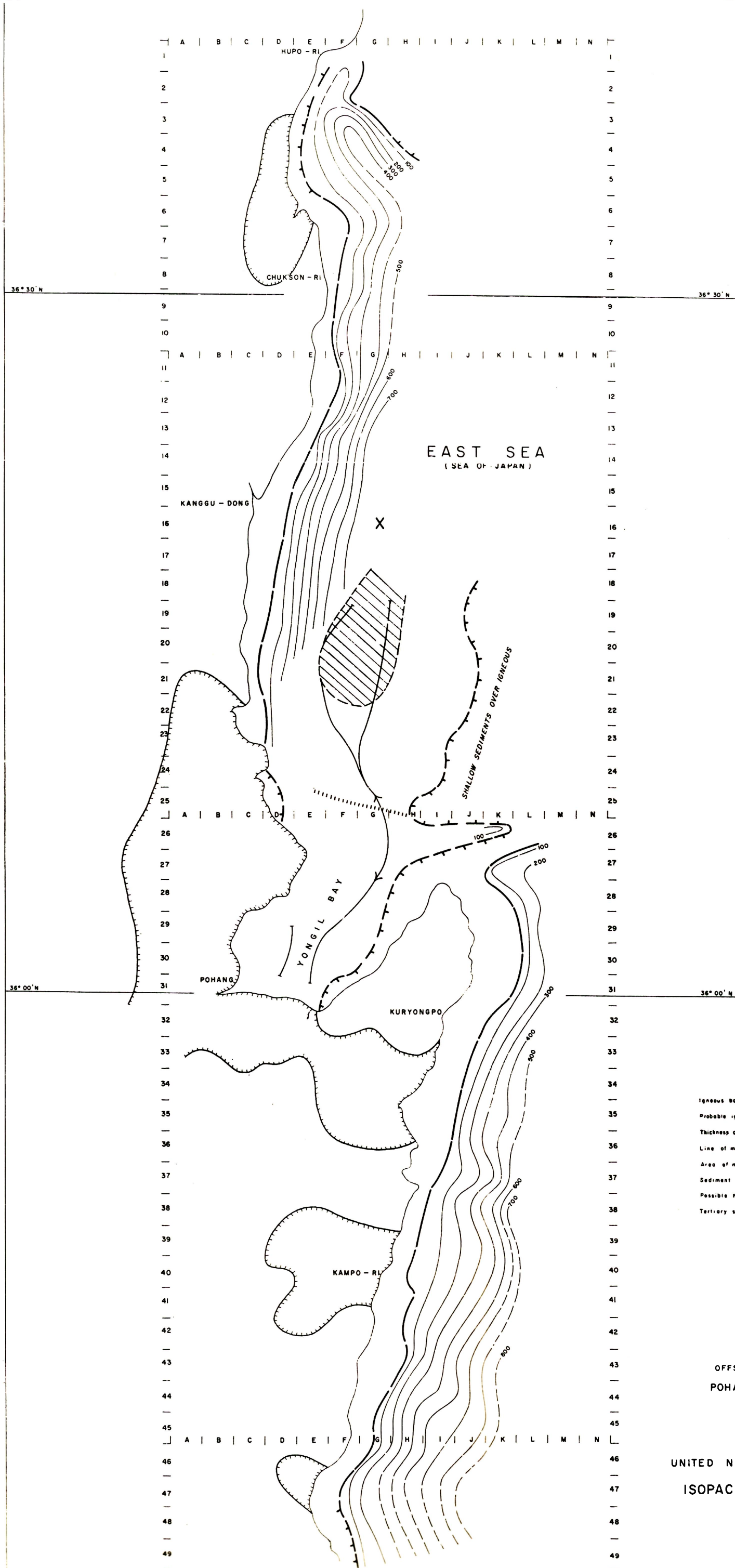


OFFSHORE GEOPHYSICAL INVESTIGATION
POHANG AREA, SOUTHEAST COAST
REPUBLIC OF KOREA
CONDUCTED IN COLLABORATION WITH THE
REPUBLIC OF KOREA
AND THE
UNITED NATIONS DEVELOPMENT PROGRAMME
LOCATION MAP

129° 10' E

129° 48' E



LEGEND

- Igneous boundary (within 100 meters of surface).....
- Probable igneous boundary.....
- Thickness contour, tertiary sediments.....
- Line of maximum thickness.....
- Area of maximum thickness (possibly 1000 meters).....
- Sediment thickness of 1000 meters.....
- Possible hinge-line.....
- Tertiary sediments on land.....

CONTOUR INTERVAL : 100 meters

OFFSHORE GEOPHYSICAL INVESTIGATION
POHANG AREA, SOUTHEAST COAST
REPUBLIC OF KOREA
CONDUCTED IN COLLABORATION WITH THE
REPUBLIC OF KOREA
AND THE
UNITED NATIONS DEVELOPMENT PROGRAMME
ISOPACH MAP OF TERTIARY SEDIMENTS

SCALE
0 2 4 6 8 10 km

To accompany report by
MARVIN EHRLICH, Geophysicist
HUNTEC LIMITED, Toronto, Canada - April, 1967

129° 10' E

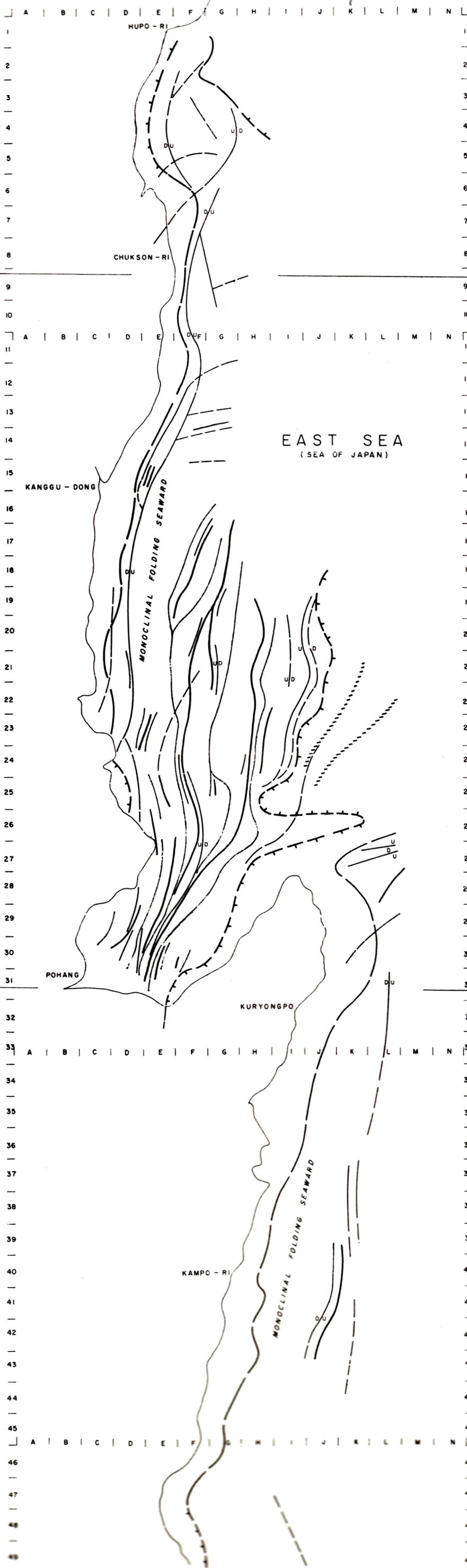
129° 48' E

36° 30' N

36° 30' N

36° 00' N

36° 00' N



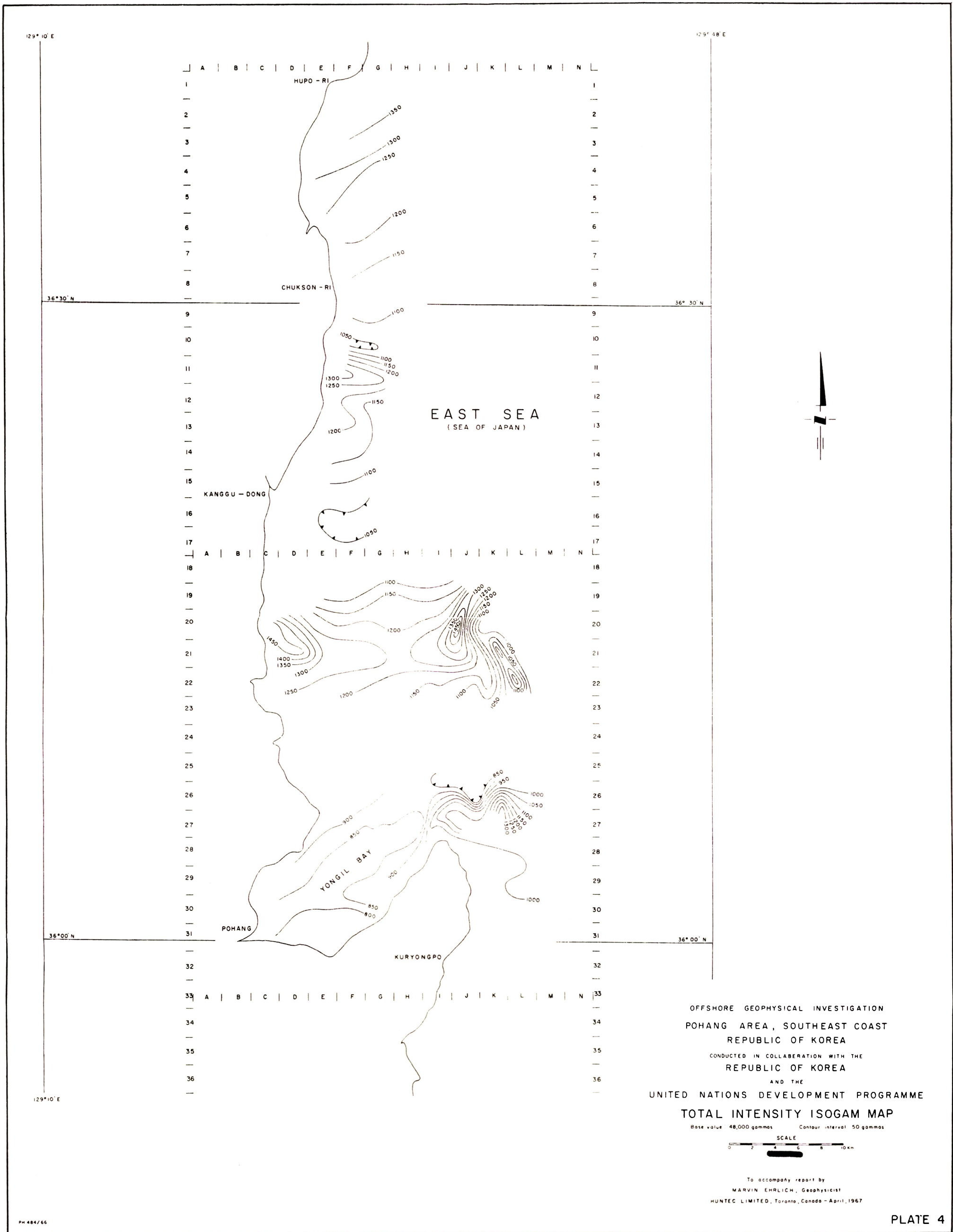
LEGEND

- igneous boundary (within 100 meters of surface) ————
- Probable igneous boundary..... T T T
- igneous ridge..... / / / /
- Fault..... - - - - -
- Probable fault..... - - - - -
- Anticlinal axis..... ~ ~ ~ ~ ~
- Synclinal axis..... ~ ~ ~ ~ ~

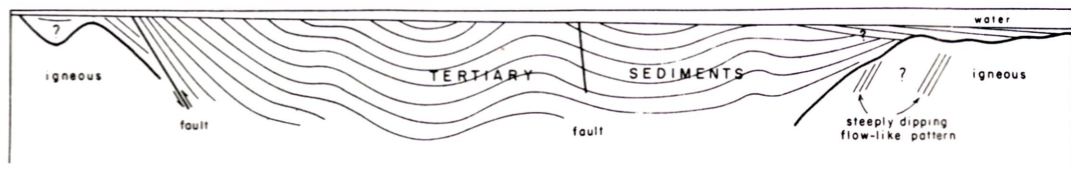
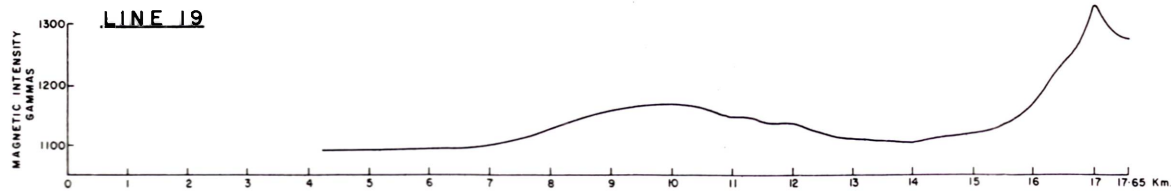
OFFSHORE GEOPHYSICAL INVESTIGATION
POHANG AREA, SOUTHEAST COAST
REPUBLIC OF KOREA
CONDUCTED IN COLLABORATION WITH THE
REPUBLIC OF KOREA
AND THE
UNITED NATIONS DEVELOPMENT PROGRAMME
GEOLOGICAL STRUCTURE MAP

SCALE
0 1 2 3 4 5 6 7 8 9 10 km

To accompany report by
WALTER EMBLICH, Geophysicist
UNTEC LIMITED, Toronto, Canada - April, 1967



OFFSHORE GEOPHYSICAL INVESTIGATION
POHANG AREA, SOUTHEAST COAST
REPUBLIC OF KOREA
CONDUCTED IN COLLABORATION WITH THE
REPUBLIC OF KOREA
AND THE
UNITED NATIONS DEVELOPMENT PROGRAMME
MAGNETIC PROFILES &
GEOLOGIC CROSS-SECTIONS



To accompany report by
MARVIN EHRLICH, Geophysicist
HUNTEC LIMITED, Toronto, Canada - April, 1967

NOTE: For total magnetic intensity add 48,000 gammas
Vertical distances on geologic cross-sections
not drawn to scale

