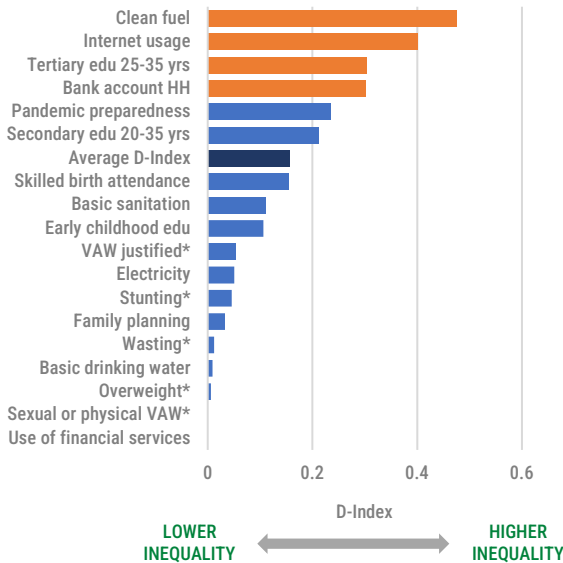


REDUCING INEQUALITY IN ALL ITS FORMS IS AT THE HEART OF THE 2030 AGENDA FOR SUSTAINABLE DEVELOPMENT

DISSIMILARITY INDEX (D-INDEX)



SOURCE: MICS 2019
NOTE: STANDARD ANALYSIS WITH 61,242 OBSERVATIONS. USE OF FINANCIAL SERVICES AND SEXUAL OR PHYSICAL VIOLENCE AGAINST WOMEN ARE NOT SHOWN DUE TO DATA UNAVAILABILITY.
* TO KEEP THE SAME INTERPRETATION AS FOR OTHER POSITIVELY DEFINED INDICATORS (OPPORTUNITIES), THE ABSENCE OF THE BARRIER IS CALCULATED.

IN BANGLADESH, INEQUALITY IS HIGHEST IN

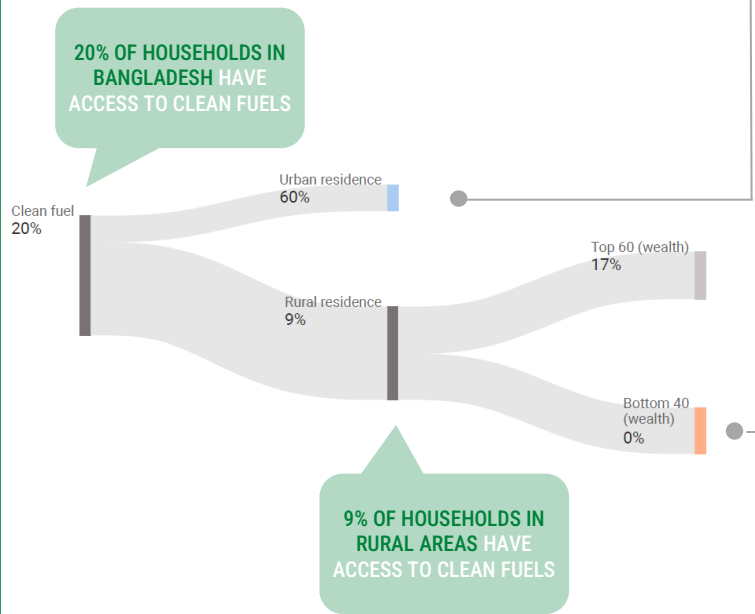
CLEAN FUELS

INTERNET USAGE

TERTIARY EDUCATION

NO ONE IN POORER HOUSEHOLDS IN RURAL AREAS HAS ACCESS TO CLEAN FUELS COMPARED TO 60% OF HOUSEHOLDS IN URBAN AREAS

CLASSIFICATION AND REGRESSION TREE (CART) IN ACCESS TO CLEAN FUELS



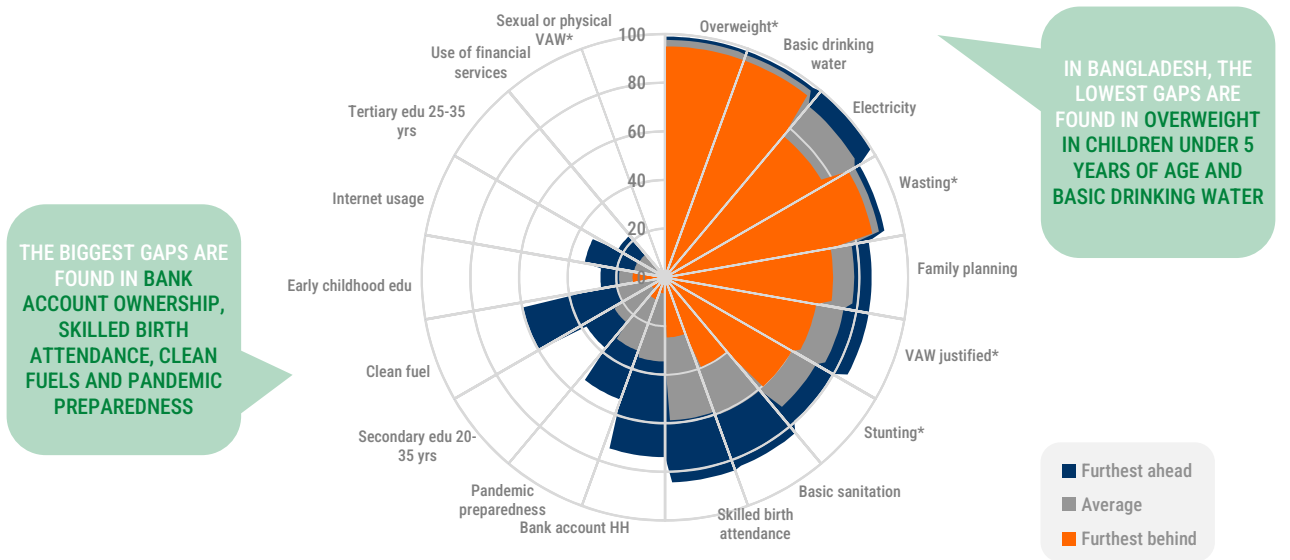
SOURCE: MICS 2019
NOTE: STANDARD ANALYSIS WITH 61,242 OBSERVATIONS



LEAVING NO ONE BEHIND
Reducing multiple dimensions of inequality

DISCOVER HOW DIFFERENT CIRCUMSTANCES INTERACT TO CREATE UNEQUAL ACCESS TO BASIC OPPORTUNITIES IN ASIA AND THE PACIFIC. EXPLORE MORE ABOUT OUR LNOB ANALYSIS AT LNOB.UNESCAP.ORG

GAPS IN ACCESS TO OPPORTUNITIES OR PREVALENCE OF BARRIERS BETWEEN THE FURTHEST BEHIND AND THE FURTHEST AHEAD GROUPS

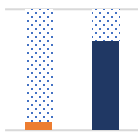


SOURCE: MICS 2019

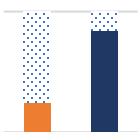
NOTE: STANDARD ANALYSIS WITH 61,242 OBSERVATIONS. THE ORANGE BAR REPRESENTS THE AVERAGE RATE OF THE FURTHEST BEHIND GROUP. THE BLUE BAR REPRESENTS THE AVERAGE RATE OF THE FURTHEST AHEAD GROUP. THE GRAY BAR IS THE AVERAGE RATE OF THE POPULATION, BY WHICH OPPORTUNITIES AND/OR BARRIERS ARE SORTED. USE OF FINANCIAL SERVICES AND SEXUAL OR PHYSICAL VIOLENCE AGAINST WOMEN ARE NOT SHOWN DUE TO DATA UNAVAILABILITY.

* TO KEEP THE SAME INTERPRETATION AS FOR OTHER POSITIVELY DEFINED INDICATORS (OPPORTUNITIES), THE ABSENCE OF THE BARRIER IS CALCULATED.

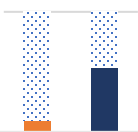
MANY PEOPLE ARE LEFT BEHIND IN ACCESS TO OPPORTUNITIES



7% OF POORER HOUSEHOLDS WITH LOWER EDUCATION HAVE A BANK ACCOUNT COMPARED TO 74% OF RICHER HOUSEHOLDS WITH TERTIARY EDUCATION



25% OF POORER WOMEN WITH LOWER EDUCATION AND 3 OR MORE CHILDREN BIRTHED HAVE ACCESS TO SKILLED BIRTH ATTENDANCE COMPARED TO 84% OF RICHER WOMEN WITH SECONDARY OR TERTIARY EDUCATION IN URBAN AREAS



10% OF POORER INDIVIDUALS UNDER 25 YEARS OF AGE WITH LOWER EDUCATION ARE ABLE TO PROTECT FROM A PANDEMIC IN THEIR HOME COMPARED TO 54% OF RICHER INDIVIDUALS OVER 25 YEARS OF AGE WITH SECONDARY OR TERTIARY EDUCATION

FURTHEST BEHIND FURTHEST AHEAD



ACTION PLAN
TO STRENGTHEN REGIONAL COOPERATION
ON SOCIAL PROTECTION IN ASIA AND THE PACIFIC

DISCOVER HOW SOCIAL PROTECTION ADVANCES THE COMMITMENT OF LEAVING NO ONE BEHIND IN ASIA AND THE PACIFIC. EXPLORE MORE ABOUT SOCIAL PROTECTION AT [SPOT.UNESCAP.ORG](https://spot.unescap.org)